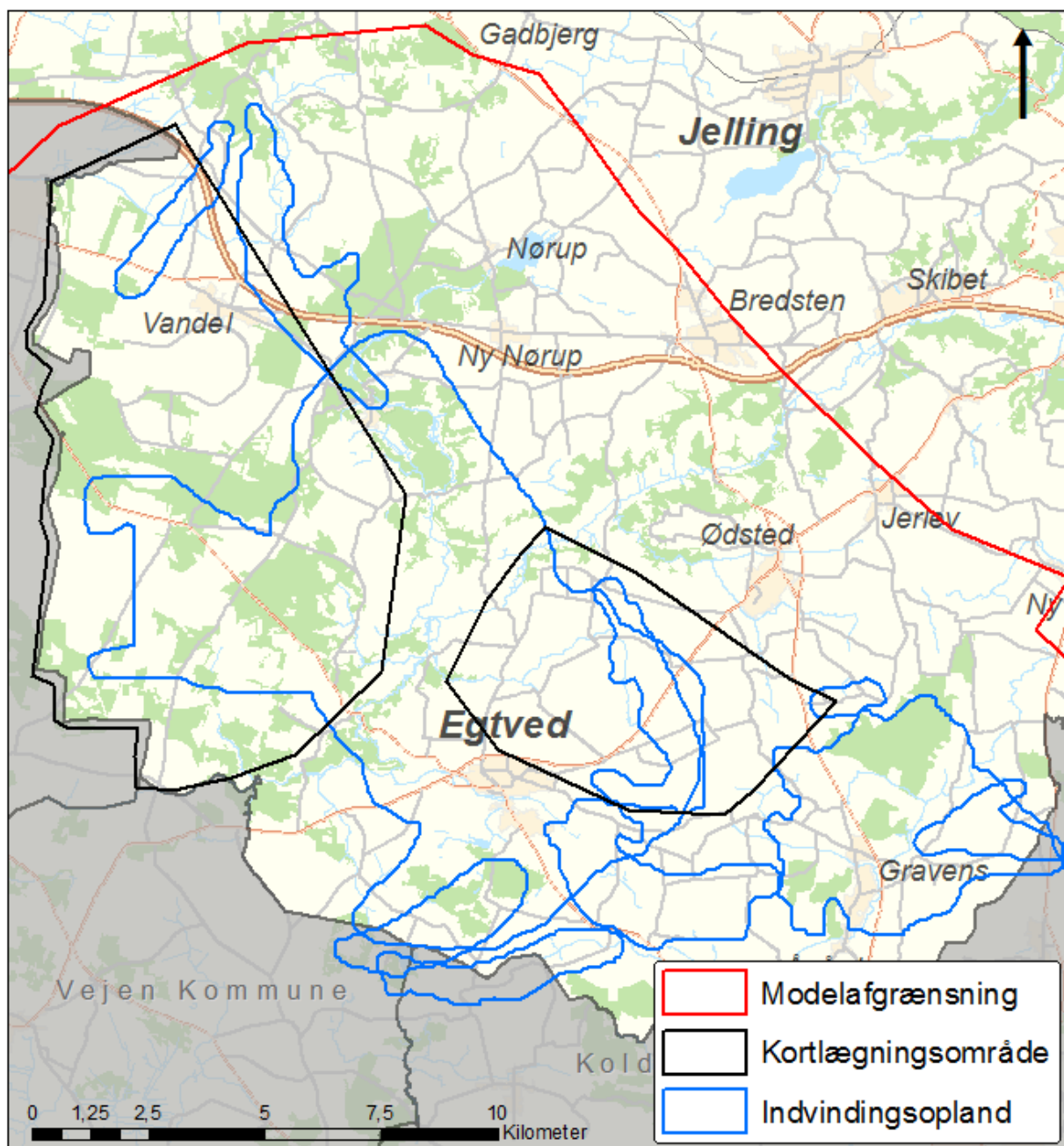




DEL 2 – AREALANVENDELSEN I VANDEL-VORK-OMRÅDET 2018

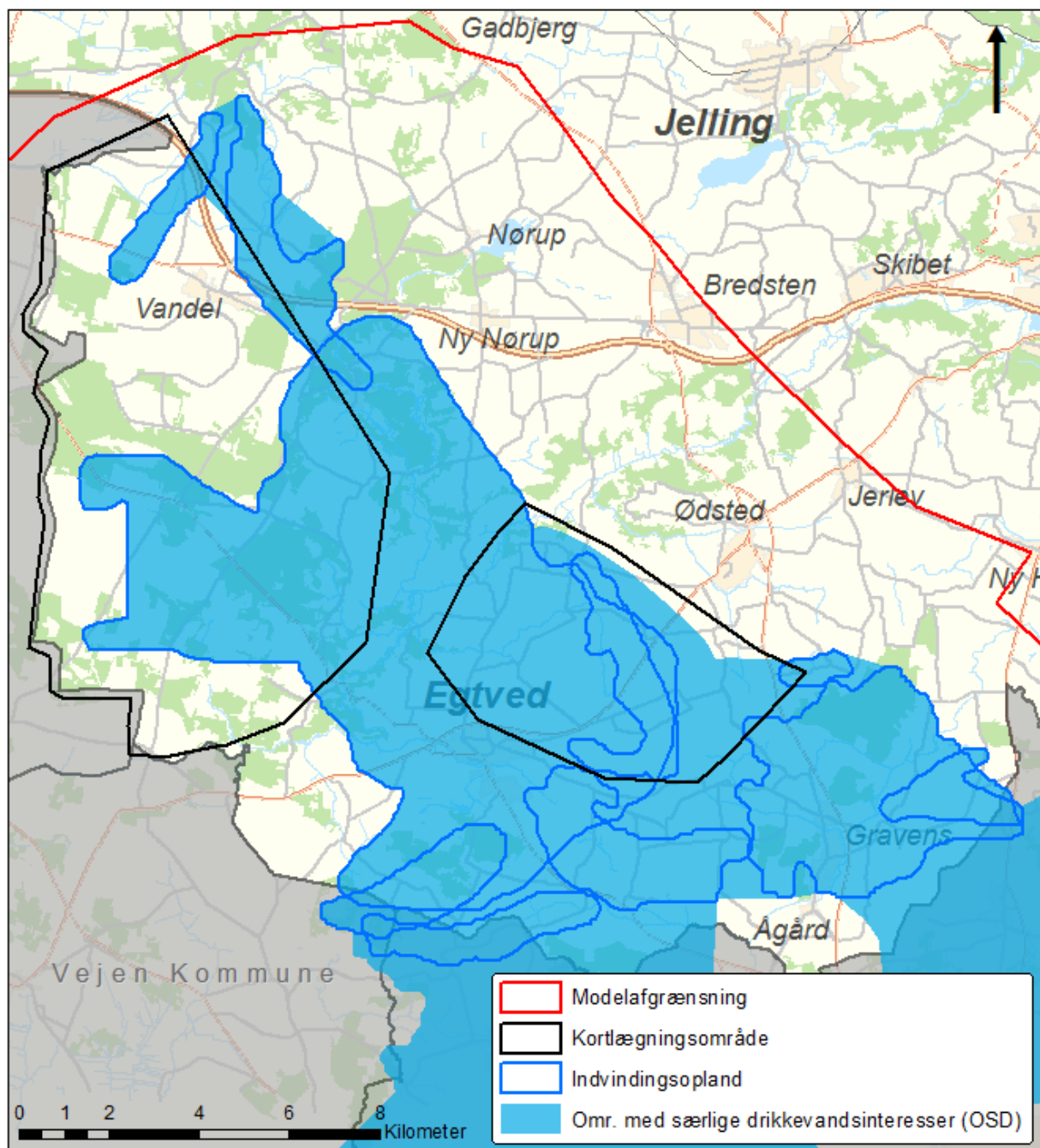
TEKNIK & MILJØ



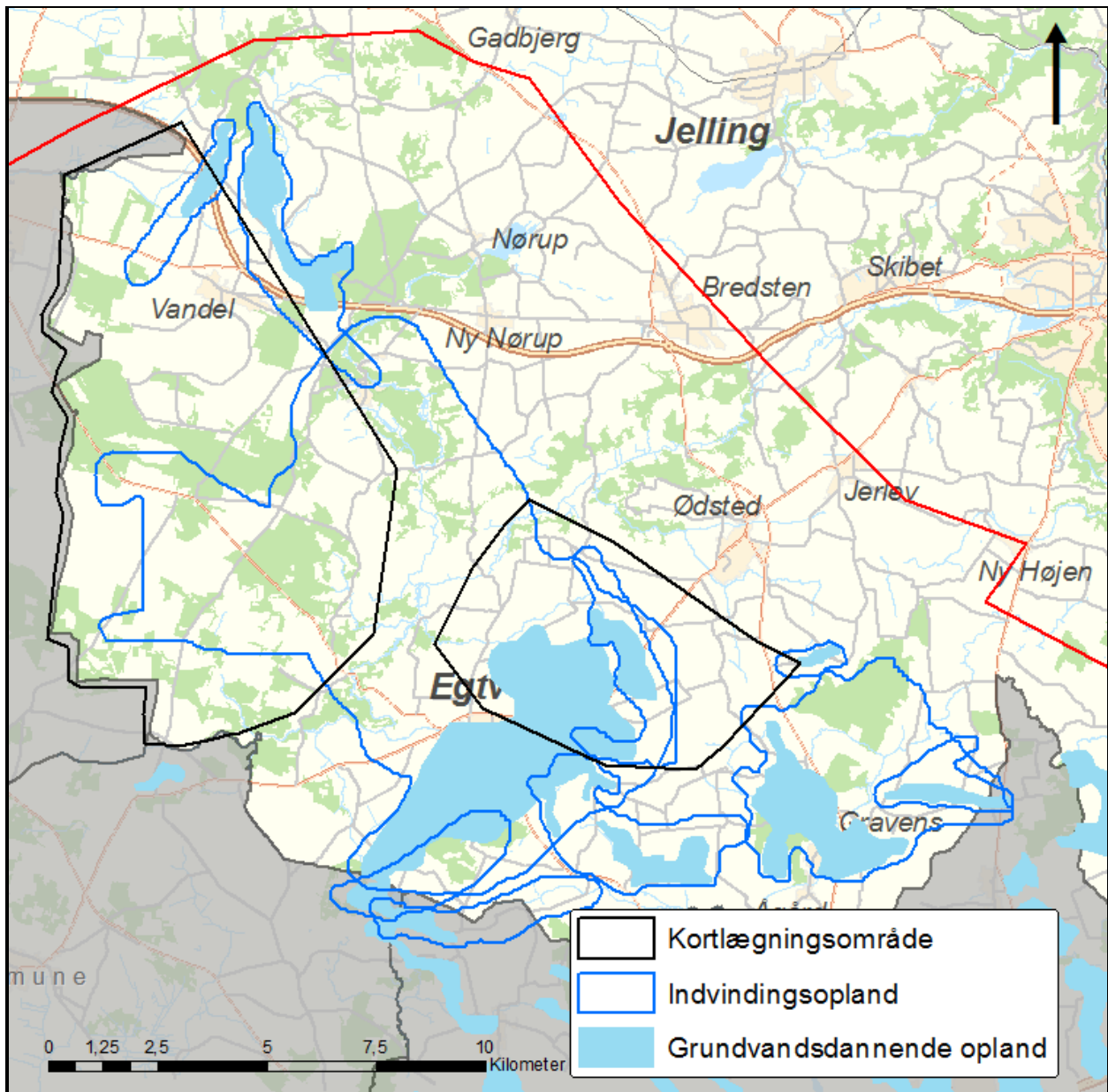
Modelafgrænsning, kortlægningsområder og indvindingsoplande

Modelafgrænsning: Modelafgrænsningen (rød streg) kan ikke ses i den sydlige del af området, men går et godt stykke ind i Vejen Kommune og i Kolding Kommune. Modelafgrænsningen er fastlagt på baggrund af grundvandsspejlets beliggenhed under terræn, vandløbene og Kolding Fjord.

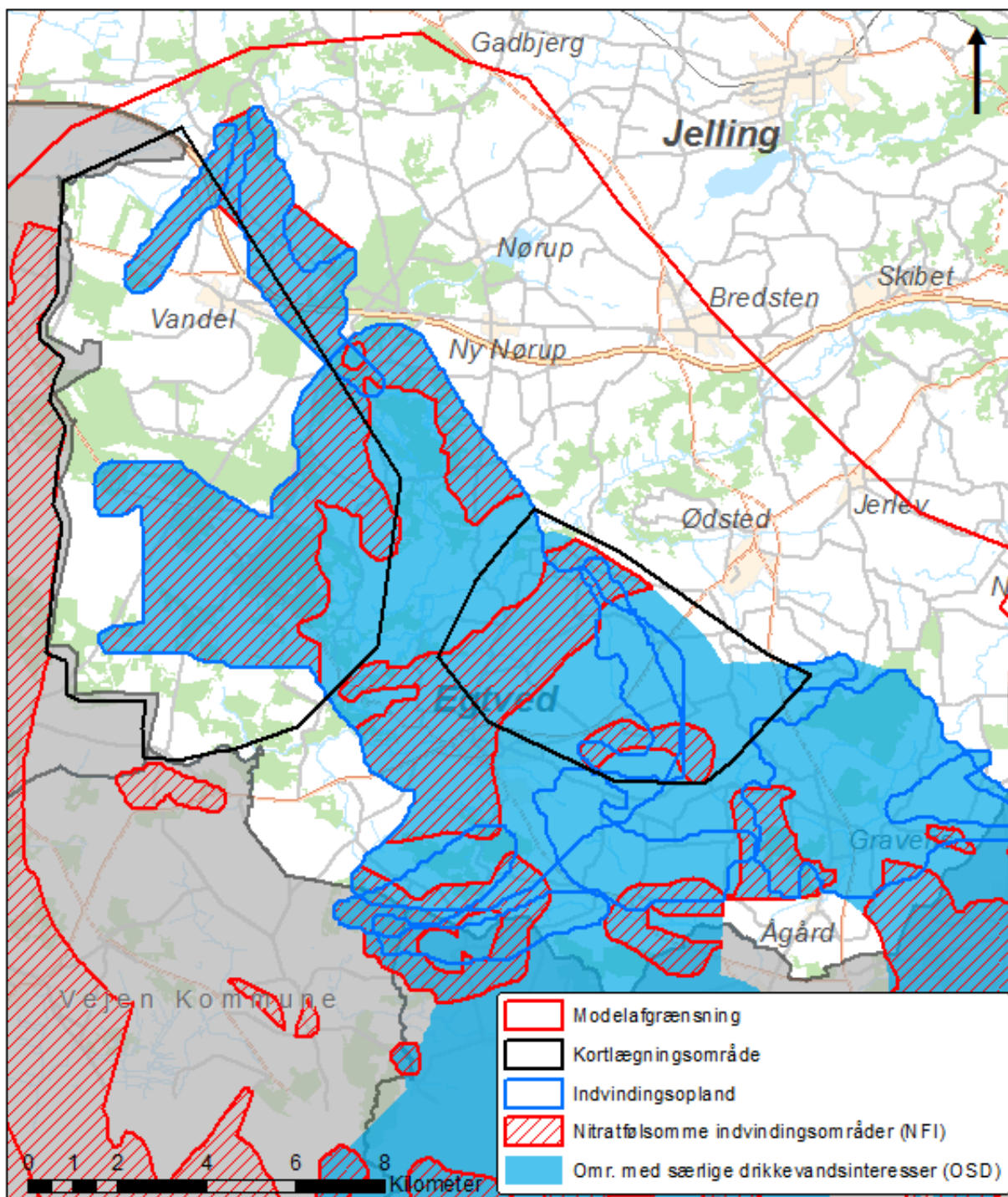
Kortlægningsområder: Kortlægningsområderne er udpeget der, hvor der er særlige drikkevandsinteresser og hvor der er indvindingsoplande. Det var Vejle Amt, der udpegede områderne.



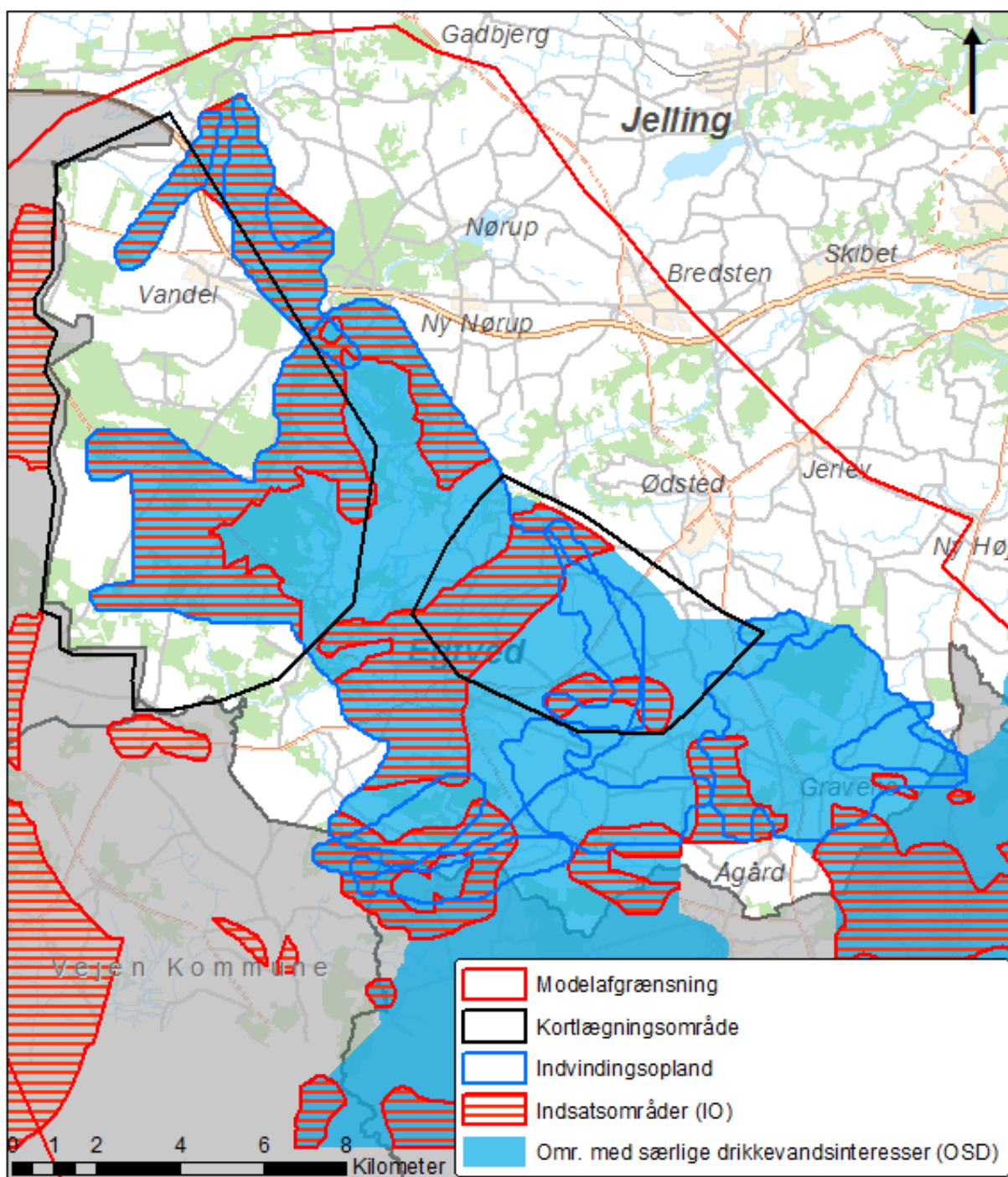
Modelafgrænsning, kortlægningsområder, indvindingsoplande og områder med særlige drikkevandsinteresser (OSD)



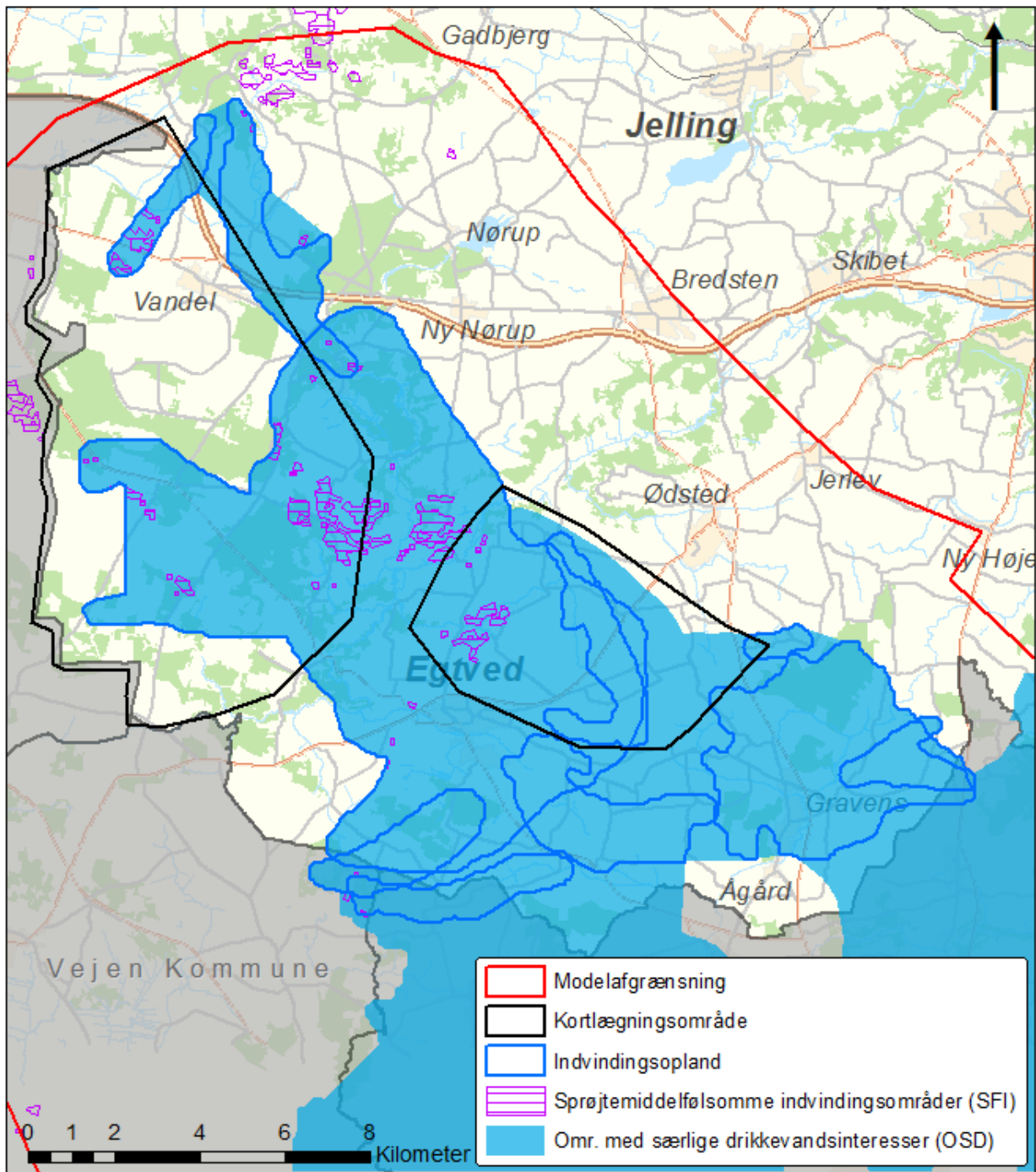
Modelafgrænsning, kortlægningsområder, indvindingsoplande og grundvandsdannende oplande



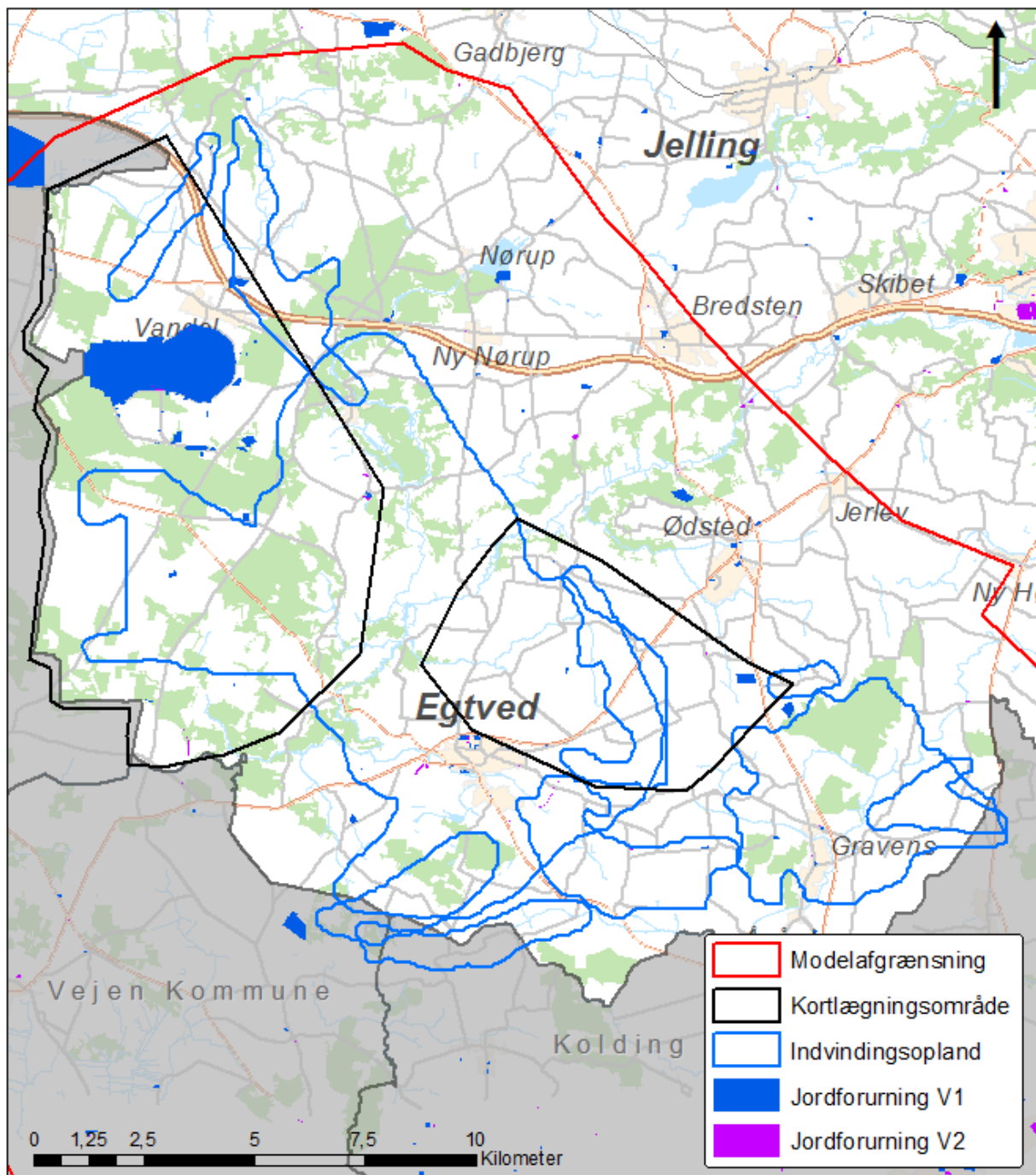
Modelafgrænsning, kortlægningsområder, indvindingsoplande, områder med særlige drikkevandsinteresser (OSD) og nitratfølsomme indvindingsområder (NFI)



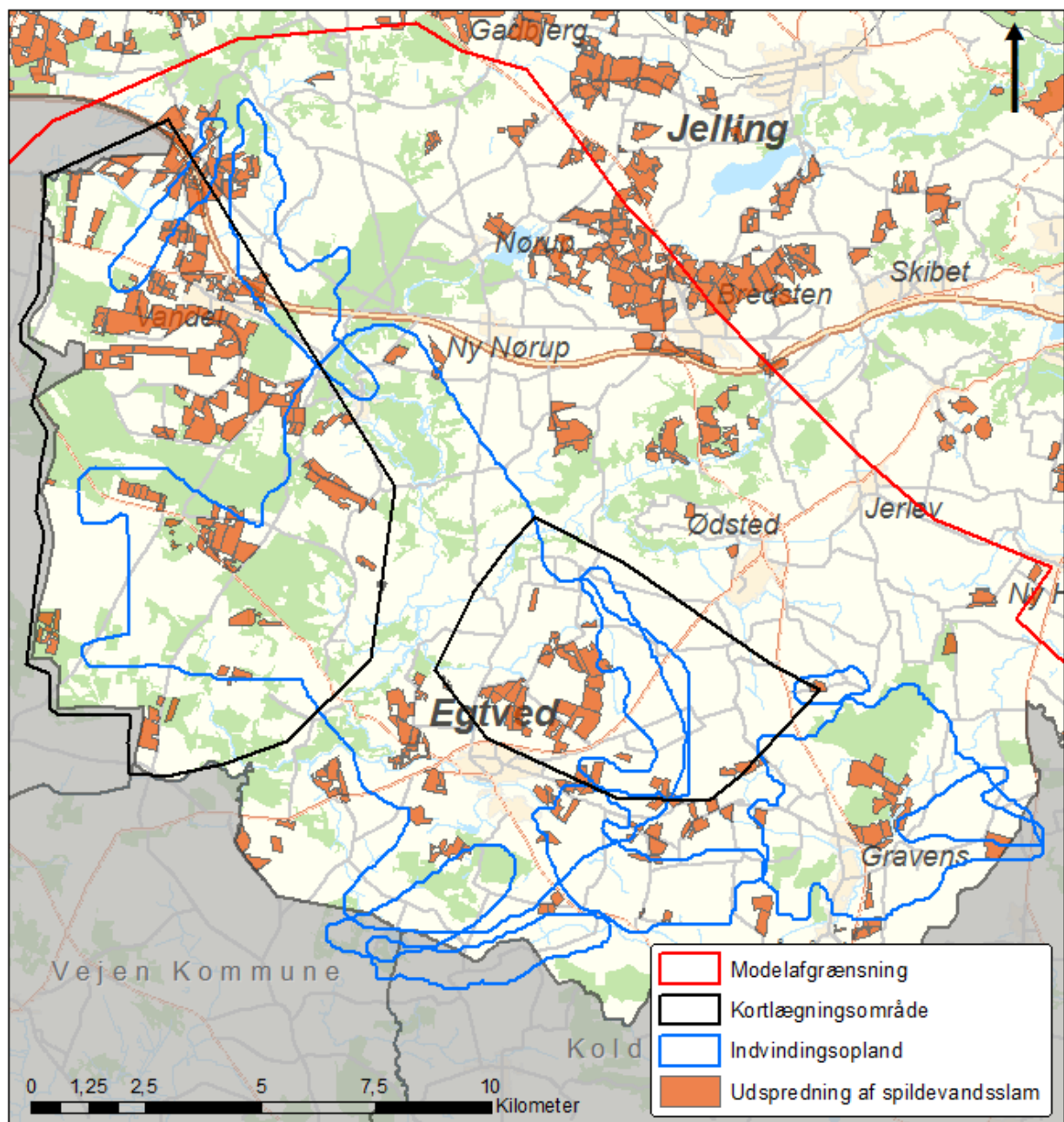
Modelafgrænsning, kortlægningsområder, indvindingsoplande, områder med særlige drikkevandsinteresser (OSD) og indsatsområder (IO)



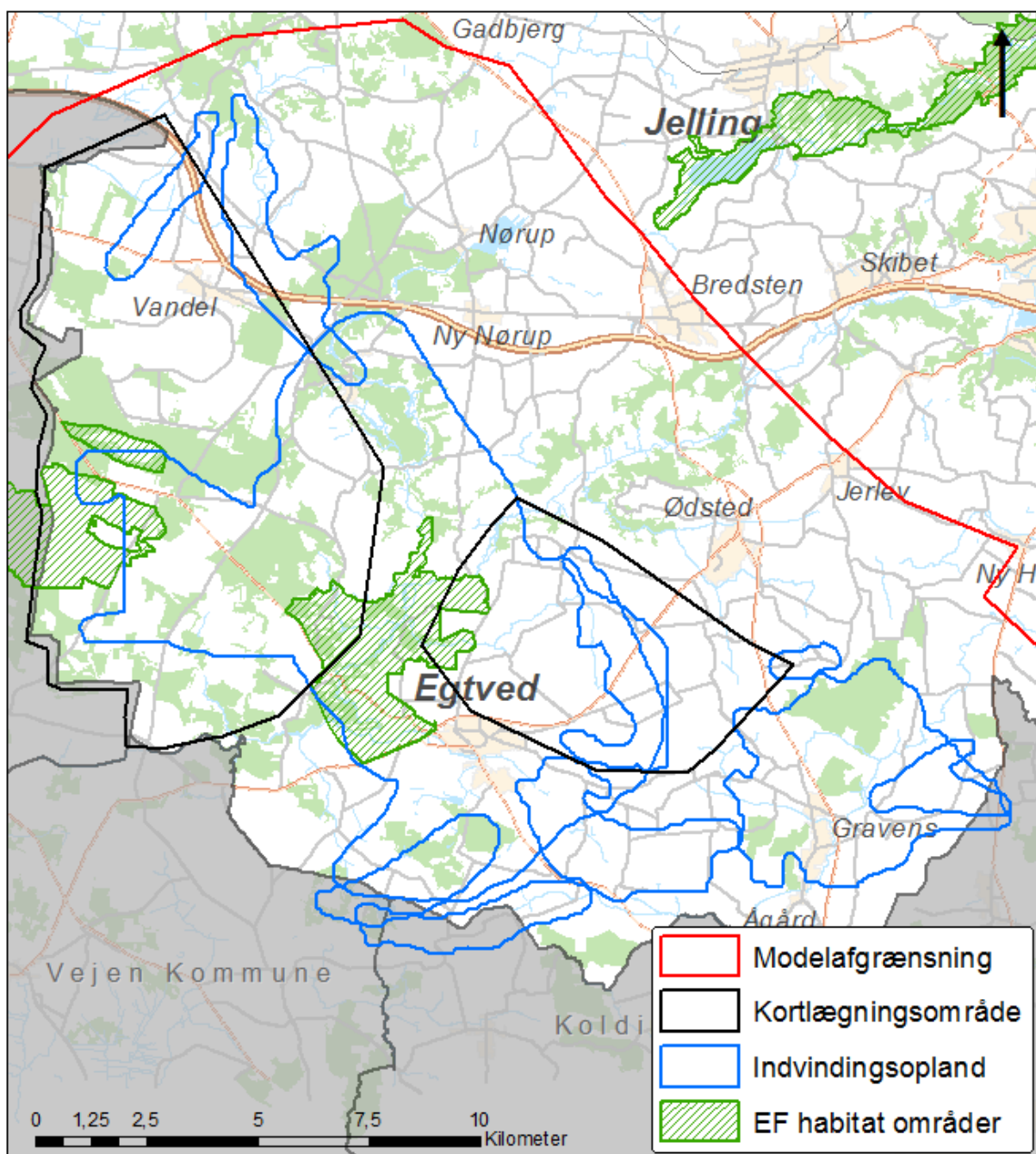
Modelafgrænsning, kortlægningsområder, indvindingsoplande, områder med særlige drikkevandsinteresser (OSD) og sprøjtemiddelfølsomme indvindingsområder (SFI)



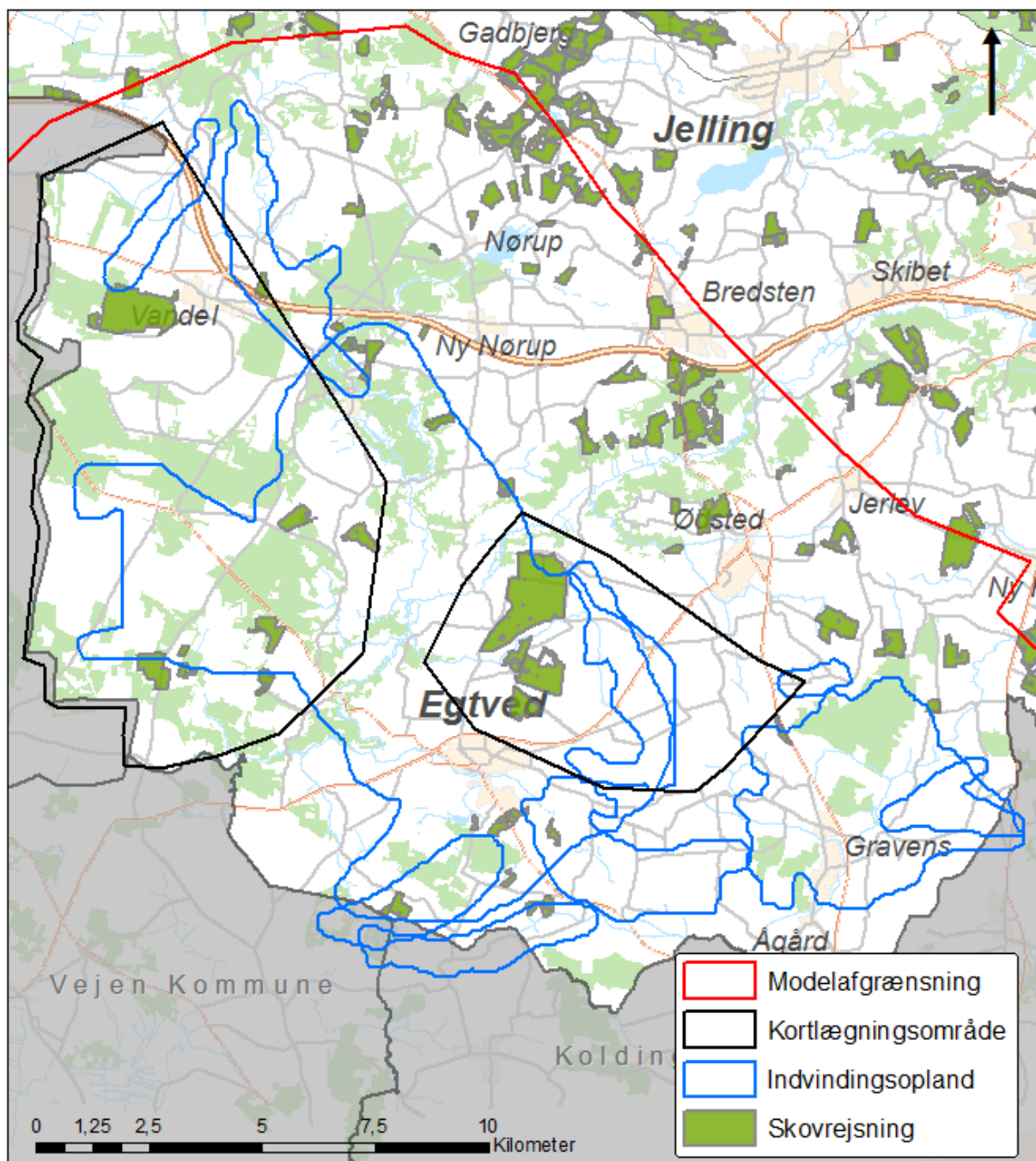
Modelafgrænsning, kortlægningsområder, indvindingsoplande og V1 og V2-kortlagte forureninger



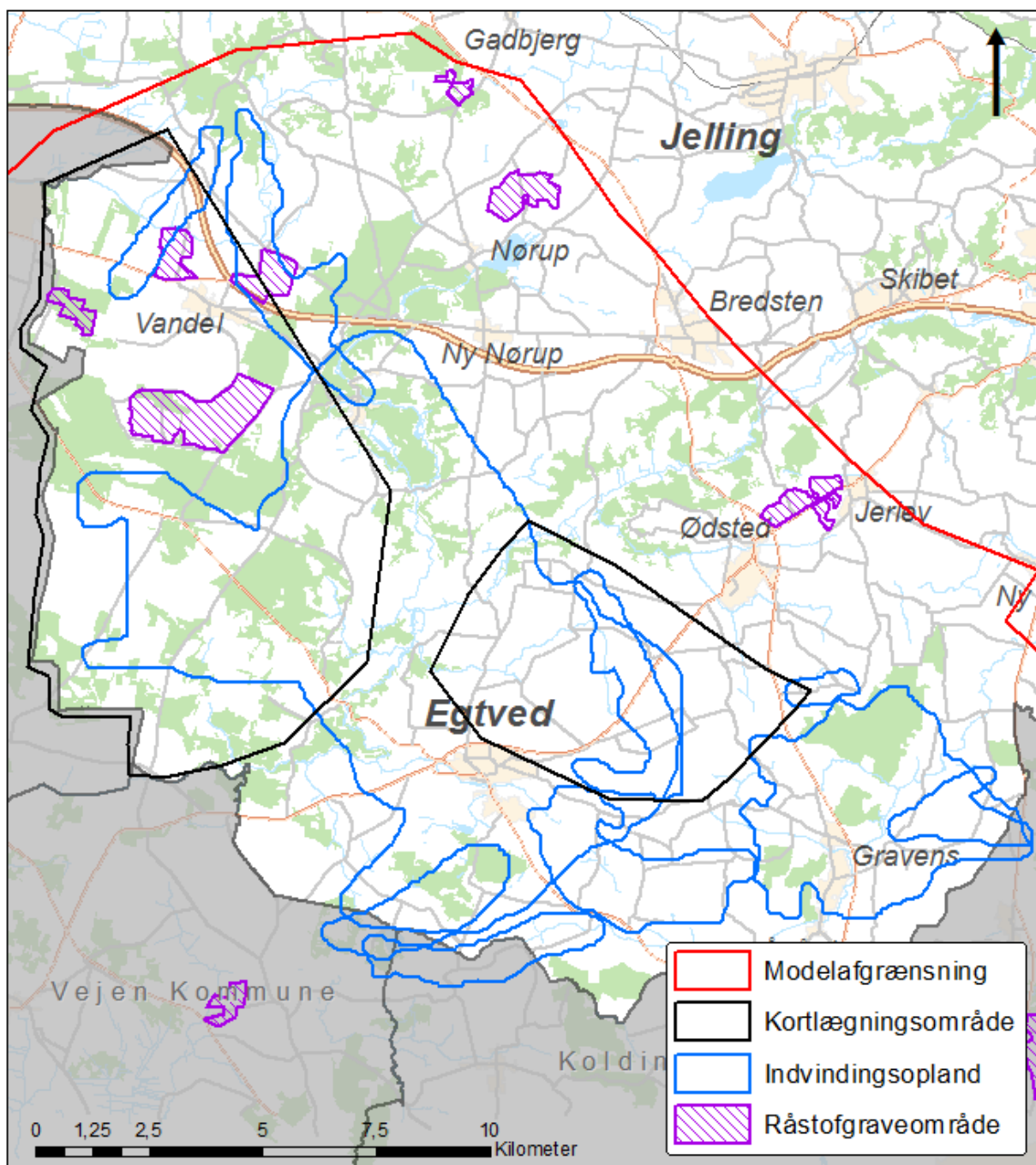
Modelafgrænsning, kortlægningsområder, indvindingsoplande og udsprejningsarealer for spildevandsslam



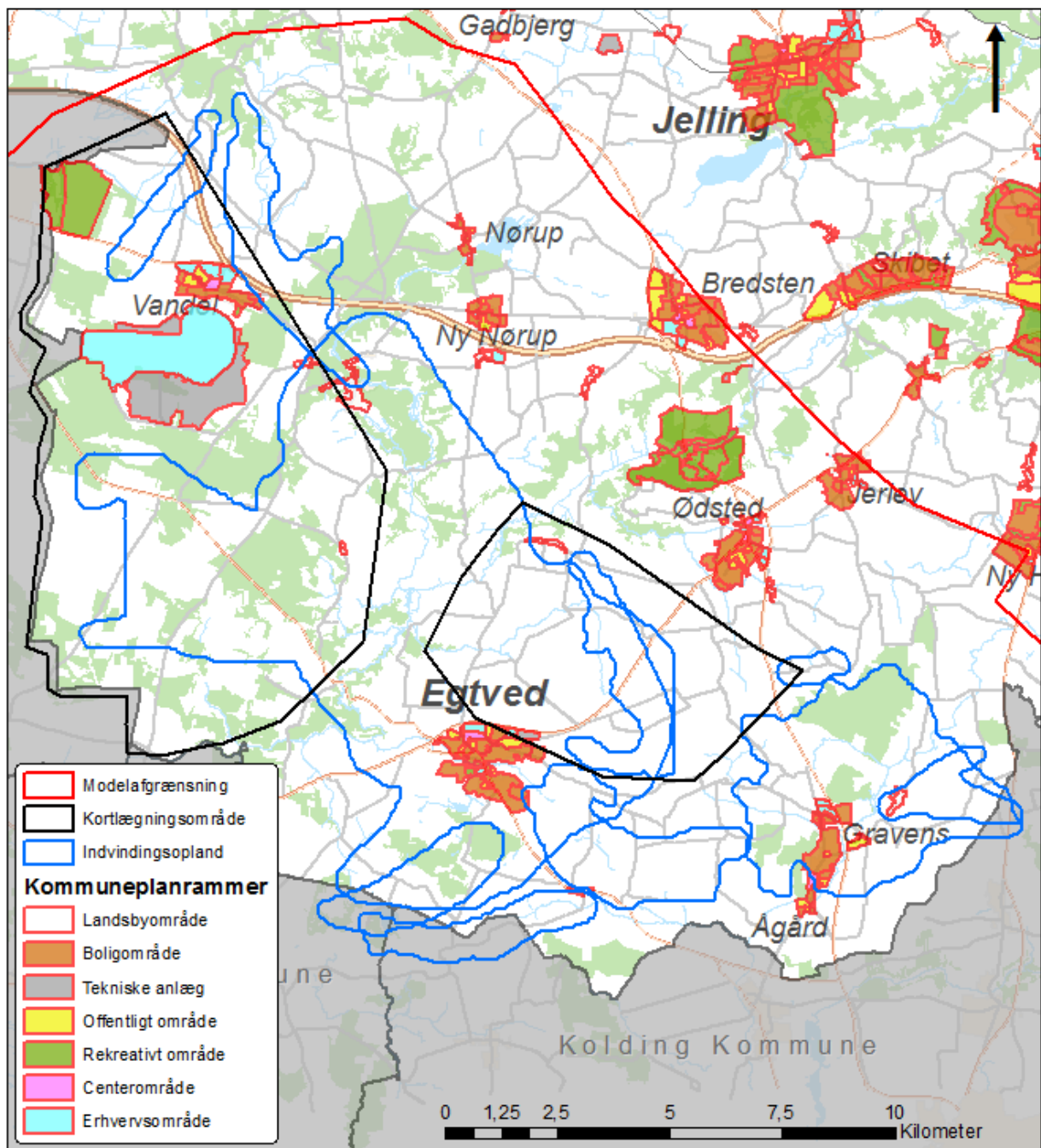
Modelafgrænsning, kortlægningsområder, indvindingsoplande og EF habitatområder (Natura 2000)



Modelafgrænsning, kortlægningsområder, indvindingsoplande og ønskede skovrejsningsområder



Modelafgrænsning, kortlægningsområder, indvindingsoplande og råstofgraveområder



Modelafgrænsning, kortlægningsområder, indvindingsoplande og kommuneplanrammer

the 1990s, the number of people in the UK who are aged 65 and over has increased from 10.5 million to 13.5 million (19.5% of the population).

There is a growing awareness of the need to address the needs of older people, and the Government has set out a strategy for the 21st century in the White Paper on *Ageing Better: Our Future* (Department of Health 2000). This sets out a vision of a society in which older people are able to live well, and to contribute to society.

The White Paper sets out a number of key objectives, including:

- to improve the health and well-being of older people;
- to ensure that older people are able to live independently and to contribute to society;
- to ensure that older people are able to access the services and support they need.

The White Paper also sets out a number of key actions, including:

- to improve the health and well-being of older people by promoting healthy living and preventing illness and disability;
- to ensure that older people are able to live independently and to contribute to society by providing them with the services and support they need;
- to ensure that older people are able to access the services and support they need by improving the way in which services are delivered.

The White Paper also sets out a number of key principles, including:

- older people should be able to live well and to contribute to society;
- older people should be able to access the services and support they need;
- older people should be able to live independently and to contribute to society.

The White Paper also sets out a number of key actions, including:

- to improve the health and well-being of older people by promoting healthy living and preventing illness and disability;
- to ensure that older people are able to live independently and to contribute to society by providing them with the services and support they need;
- to ensure that older people are able to access the services and support they need by improving the way in which services are delivered.

The White Paper also sets out a number of key principles, including:

- older people should be able to live well and to contribute to society;
- older people should be able to access the services and support they need;
- older people should be able to live independently and to contribute to society.

The White Paper also sets out a number of key actions, including:

- to improve the health and well-being of older people by promoting healthy living and preventing illness and disability;
- to ensure that older people are able to live independently and to contribute to society by providing them with the services and support they need;
- to ensure that older people are able to access the services and support they need by improving the way in which services are delivered.

The White Paper also sets out a number of key principles, including:

- older people should be able to live well and to contribute to society;
- older people should be able to access the services and support they need;
- older people should be able to live independently and to contribute to society.

